

TOUCHSTONE GALLERY

ESTABLISHED 1976

FOR IMMEDIATE RELEASE

November 3 – 28, 2010

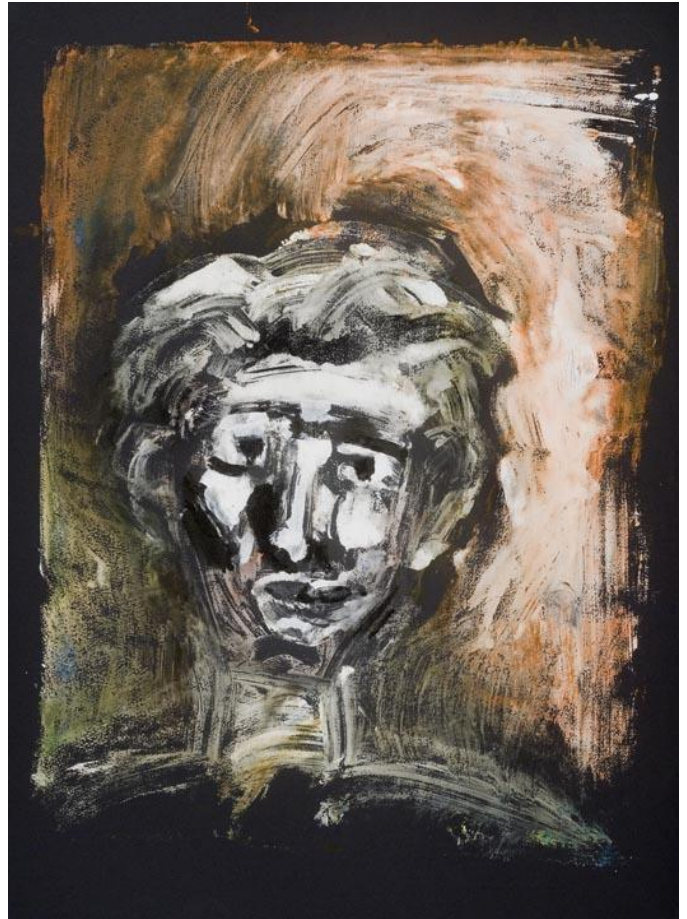
**Opening Reception:
Friday, November 5, 6-8:30 pm**

On, Inside, and Behind

*"are we to paint what's on the face, what's
inside the face, or what's behind it?"*

Faces by Charles St. Charles

With the faces in his new solo exhibition, Charles St. Charles works through Picasso's question, "are we to paint what's on the face, what's inside the face, or what's behind it." His unique blend of color, abstraction, and expression acknowledge by turns man's outer, inner, and ancestral layers. We probably know these people. Charles says, "if these new pieces work, it's because it's sometimes hard to stop looking at ourselves."



For more information please contact Ksenia Grishkova, Director, at 202-347-2787 or e mail info@touchstonegallery.com

Image: Beyond Behind by Charles St. Charles, Acrylic on paper, 26" x 37" framed

901 New York Ave NW, Washington, DC 20001 | Phone: 202-347-2787 | Fax: 202-347-3339
E-mail: info@touchstonegallery.com | <http://www.touchstonegallery.com>
GALLERY HOURS: Wednesday-Thursday 11-6, Friday 11-8, Saturday-Sunday 12-5