

**TOUCHSTONE
GALLERY**

406 7th Street, NW 2nd Floor • Washington, DC 20004
Phone 202.347.2787 • Fax 202.347.3339
www.touchstonegallery.com
touchstonegallery@verizon.net • info@touchstonegallery.com
Wed-Fri 11.00-5.00 • Sat-Sun 12.00-5.00



FOR IMMEDIATE RELEASE:

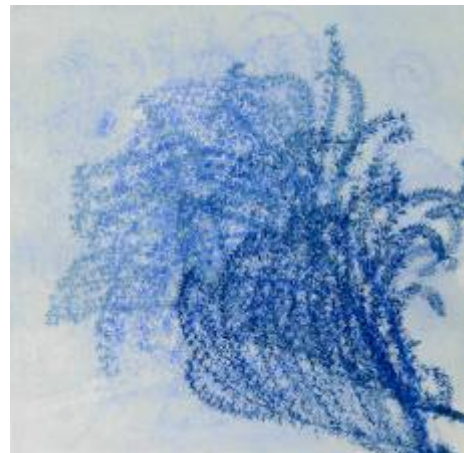
**Mainly Monotypes:
Prints by Mary D. Ott**

October 8 - November 9, 2008

**Opening Reception: Friday, October 10
6 - 8:30 PM**

"Mainly Monotypes: Prints by Mary D. Ott" at Touchstone Gallery features one-of-a-kind images of ornamental grasses. These colorful and expressive monotypes* are part of Ott's series of more than 40 original prints titled "Bouquets of Grasses."

In addition, the exhibit includes screenprints of agaves from Crete and France and landscapes from Washington, DC and the Eastern Shore of Maryland.



*A monotype is a one-of-a-kind print. Ott's are produced by creating an image with etching ink on a piece of Plexiglas (a "plate") and then printing the design on a piece of paper using a hand-operated etching press. Once the design is transferred from the plate, very little of the original design is left on the plate. For this reason there is only one print, a *monotype*, made from the image that was originally on the plate.



High-resolution images are available upon request: marydott@earthlink.net

For more information please contact Ksenia Grishkova at info@touchstonegallery.com

Images: *Bouquet of Grasses XXXI, Bouquet of Grasses XL and Bouquet of Grasses XXXV* by Mary D. Ott