

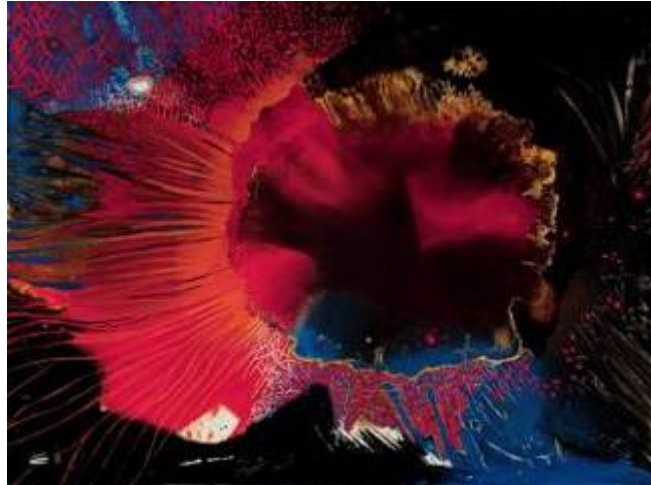
TOUCHSTONE GALLERY

406 7th Street, NW 2nd Floor • Washington, DC 20004
Phone 202.347.2787 • Fax 202.347.3339
www.touchstonegallery.com • touchstonegallery@verizon.net
Wed-Fri 11.00-5.00 • Sat-Sun 12.00-5.00

FOR IMMEDIATE RELEASE:

March 12 - April 6, 2008

CYNTHIA YOUNG



Morning Place by Cynthia Young (left) *Explosion* by Cynthia Young (right)

"SUN AND SHADOW"

Opening Reception: Friday, March 14, 6 - 8:30 pm

Young's work, while abstract, consistently reflects her close ties to the real world. As past exhibitions have focused on trees, tide pools and ice floes, her new work in "Sun and Shadow" introduces us to her large new pieces depicting weather conditions and seasonal changes. She layers image upon image, drawing the viewer into a mysterious world of color and suggestion.

Young explains that her style, technique and intuitive approach are influenced by the Washington Color School. With this approach, paint is poured onto a horizontal canvas (i.e., stain painting) which is then attached to a wall, where choices are made. Expanding on the Color School approach, Young paints around shapes or negative spaces to pull out the images she finds. "I may add lines or shapes as I deem appropriate," she says. The finished product relates to the natural world and offers an impression or feeling about the places she has experienced.

Young received her BA from Connecticut College for Women and her MFA from George Washington University where she was awarded first prize in painting for two years. Young taught at NOVA for 15 years and painted and taught in Italy, France, and Portugal. She was a fellow at VA Center for the Creative Arts and has work in many collections throughout the United States.

For more information please contact: Ksenia Grishkova at touchstonegallery@verizon.net